

## Technical Specifications

※ Product specifications are subject to change without prior notice to improve product performance.

### CAMERA / LIGHT

- HD Resolution
- 1/3inch color CMOS camera (124° wide-angle lens)
- Waterproof: IP68 / 8.5kg f / cm2
- Minimum applicable pipeline diameter: 100mm diameter pipe
- 12 Super White LED

### CABLE

- Distance: 50m (diameter of 4.5mm)
- Equipped with an automatic measuring encoder (displayed on a screen)

### EXTERNAL MONITOR

- Panel size / Unit size(mm) / Weight(g) : 7inch touch screen / 190Lx126Hx27D / 460
- Resolution : 1920 x 1200 Pixel (16:10)
- Brightness / Back light : 2200 cd/m<sup>2</sup> (Lightsensor) / LED
- Input / Output : HDMI / HDM, DC OUT 8.4V

### SHAFT PIPE

- Material quality: SUS (stainless steel is used to prevent corrosion and follow the standards on potable water)
- Minimum applicable diameter for saddle: diameter of 50mm
- Applicable guide part to be inserted: 40mm of perforator
- Guide part camera head with a steering ability

### CHARGEABLE BATTERY

- Samsung SDI lithium-ion battery pack (Samsung INR18650-35E)
- Rated voltage: 14.4V / Charging voltage: 16.8V
- Rated capacity: 14A(14000mA) / Charging current: 1700mA
- Charging time: 4 hours ~6 hours (Depending on the residual battery)
- Maximum hours of use: 4 hours (Depending on the use of a light)
- Charger: Lithium-ion battery only / 16.8V 2A

# PROCAM-W

HOT TAPPING CAMERA for POTABLE WATER PIPELINE Inspection



<b>TAP Electronics, Korea</b> (Headquarter)	9, Gukgasandan-daero 30-gil, Dalseong-gun, Daegu, Republic of Korea	tap2655@tap.co.kr Tel: +82-10-9919-8173
<b>Shonan Gousei Robotics</b> (Global Headquarter)	5-9, Morishita-3chome, Koto-ku, Tokyo, 135-0004, JAPAN	kaigai@shonan-gousei.co.jp Tel: +81-3-6659-3563
<b>Ko-Green GmbH</b> (EU Sole Agent)	Pallaswiesenstr. 180, 64293 Darmstadt, Germany	info@ko-green.de Tel: +49 (0)176 7007 1208
<b>Shanghai TAP Electronics, China</b> (Asian Agent)	C-106, No.480, Banting Road, SongJiang District, Shanghai, China	tap2655@tap.co.kr Tel: +86-21-6781-6670

2025.04.30

# PROCAM-W



## WHAT IS A HOT TAPPING PIPE CAMERA?

In this innovative method, a specialized camera is inserted into the live water pipe after a hole has been skillfully created on the pipe's surface using a specially designed saddle and employing the advanced Hot Tapping technique. This saddle ensures a secure and leak-free attachment to the pipe, allowing the camera to be inserted with precision.

Standard endoscopes or PUSH ROD cameras typically offer water resistance capable of withstanding water pressure of up to 1Kgf/cm (0.1 MPa). As a result, they are unsuitable for inspecting water supply pipes pressurized with high water pressure of up to 10Kgf/cm (1.0 MPa). However, the PROCAM-W stands out with its remarkable waterproof capabilities, enabling it to be effectively deployed inside water supply pipes under high water pressure conditions.

The PROCAM-W is equipped with a cutting-edge HD resolution camera, ensuring clear and detailed visuals of the pipe's interior. Ample lighting is also incorporated into the system, guaranteeing optimal visibility even in dark or murky environments within the pipe. Furthermore, the camera is attached to a semi-rigid cable, providing the flexibility and reach required to inspect sections of the pipe as long as 50 meters. With these outstanding features, the PROCAM-W empowers professionals to carry out thorough and reliable inspections in high-pressure water supply pipes, facilitating proactive maintenance and swift resolution of potential issues, thus contributing to a more efficient and dependable water distribution system.



HD Camera



High Performance



Rechargeable Battery



Manipulatable

### Valid Inspection Pipe Diameter

Applicable to water supply pipeline from a diameter of 100mm to 300mm max

### Bypass Nozzle and Water-Pressure Gauge

Used to control the water pressure when reaching the camera at the initial saddle valve.

### Folding Handle Steering Apparatus

Insert the endoscope in the direction of a blue handle



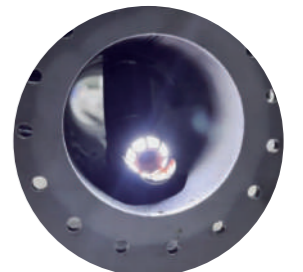
### Cable Lock Lever

Locks up the cable when inserting and exerting, and it also controls the amount of leaking water.



### Thin Pipe Lock Lever for Pipe Insert

When controlling the insertion of the camera head to a pipe, an orange control lever can lock the lead-in pipe and a silver lever controls the amount of leaking water.



### Camera Head

- HD Resolution
- 1/3inch color CMOS camera (124° wide-angle lens)

Proper way to install saddle to shaft pipe

### External Monitor

7inch touch screen



### Controller

Built in with a type writer for pipeline inspection and a recording device



# PROCAM-WL

Long distance version

Inspection distance 200m

